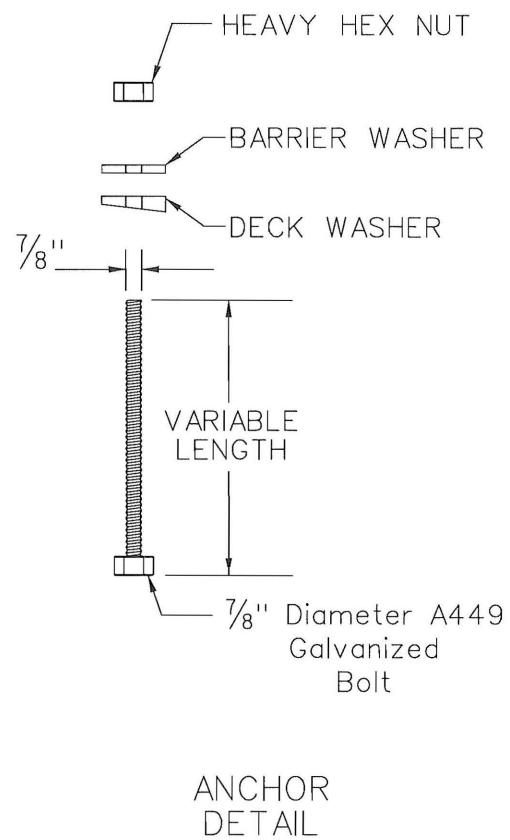
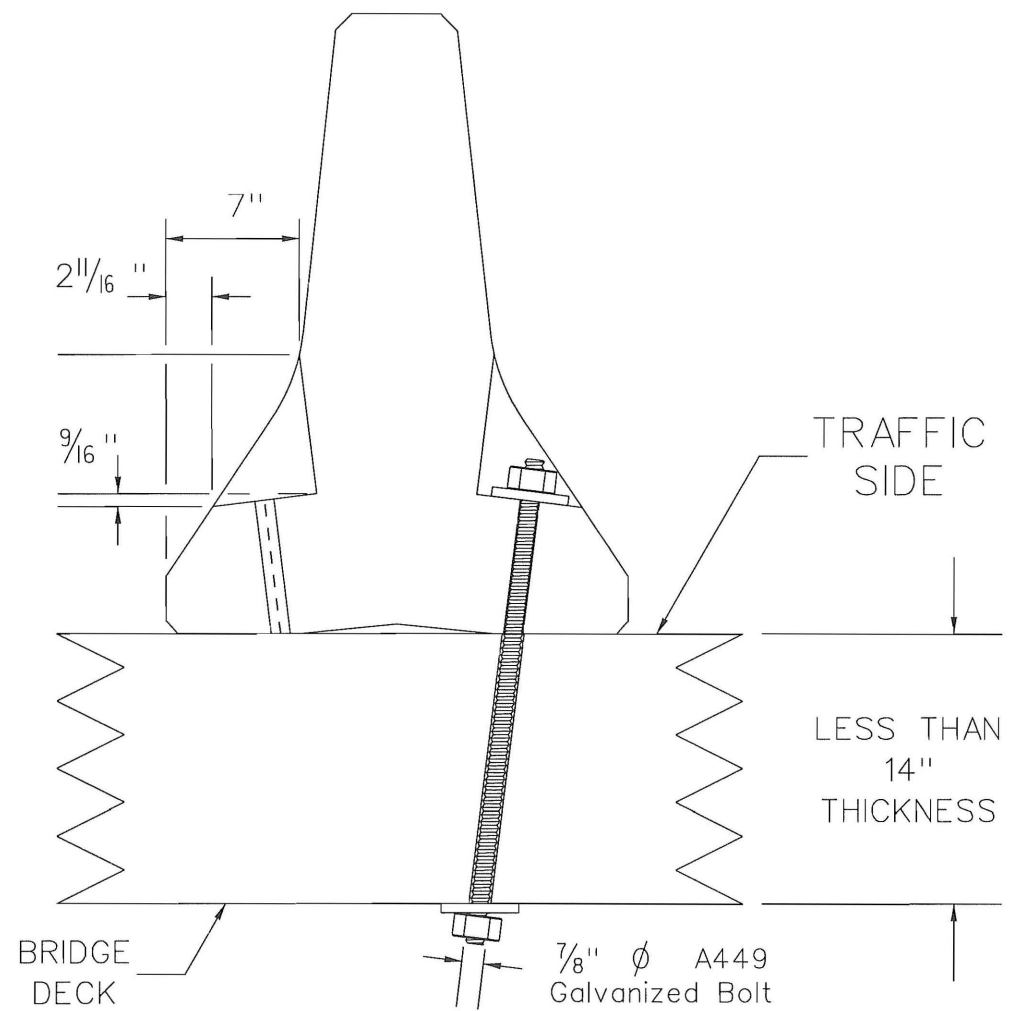


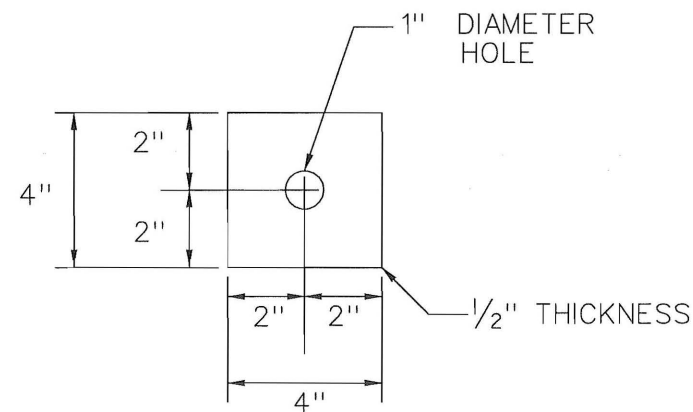
BRIDGE DECK  
ANCHOR HOLE  
DETAILS



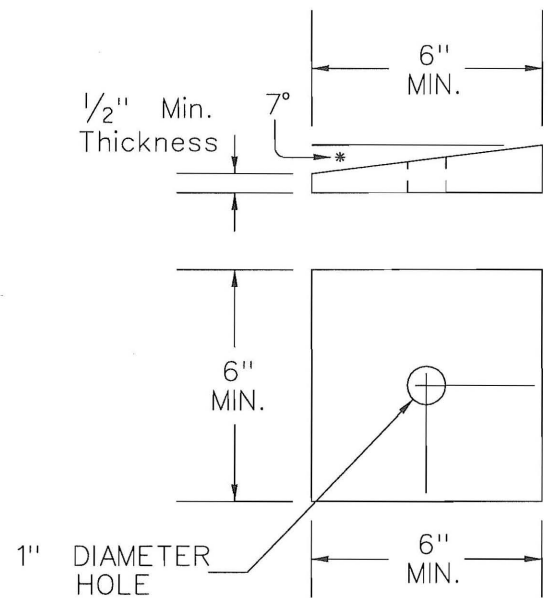
ANCHOR  
DETAIL



BRIDGE DECK  
ANCHOR HOLE  
DETAILS



BARRIER WASHER  
DETAIL



DECK WASHER  
DETAIL

#### BOLT THROUGH DECK METHOD :

1. THE "BOLT THROUGH DECK METHOD" FOR ANCHORING TEMPORARY CONCRETE BARRIER WALLS TO BRIDGE DECKS IS REQUIRED ON BRIDGE DECKS WITH DECK THICKNESSES LESS THAN 14". ON BRIDGE DECKS WITH DECK THICKNESSES 14" OR GREATER, THE "ADHESIVE BONDING METHOD" MAY BE UTILIZED WITH A MINIMUM EMBEDMENT DEPTH OF 12".
2. ONLY INSTALL ANCHORS ON THE TRAFFIC SIDE OF THE BARRIER WALL.
3. EACH ANCHOR SHALL BE A 7/8" DIAMETER A449 GALVANIZED BOLT. DETERMINE THE SPECIFIC LENGTH OF EACH BOLT PER LOCATION AS DETERMINED BY THE BRIDGE DECK THICKNESS AND THE DEPTH OF THE ANCHOR SLOT OF THE TEMPORARY CONCRETE BARRIER WALL. THE ANCHOR BOLT SHALL NOT EXTEND ABOVE THE PROFILE OF THE BARRIER WALL.
4. DRILL EACH ANCHOR HOLE COMPLETELY THROUGH THE DECK. EACH ANCHOR HOLE SHALL HAVE A DIAMETER OF 1 1/8" UNLESS OTHERWISE RECOMMENDED BY THE MANUFACTURER.
5. INSTALL EACH BOLT FROM UNDERNEATH THE BRIDGE DECK THROUGH A DECK WASHER, THE BRIDGE DECK, THE ANCHOR SLOT OF THE BARRIER WALL, A BARRIER WASHER, AND A HEAVY HEX NUT.
6. TIGHTEN EACH NUT OF EACH ANCHOR SNUG. AFTER TIGHTENING, PEEN THE THREADS OF THE ANCHOR TO PREVENT BACKTURNING OF THE NUT.
7. UPON REMOVAL OF AN ANCHOR, COMPLETELY FILL THE ANCHOR HOLE WITH A NON-SHRINK NON-METALLIC GROUT. DO NOT REUSE ANCHOR BOLTS.
8. DUE TO THE LOCATION OF ITEMS SUCH AS BRIDGE BEAMS AND UTILITIES, FIELD ADJUSTMENTS TO THE SPECIFIC LOCATION OF THE TEMPORARY CONCRETE BARRIER WALL MAY BE NECESSARY AS DETERMINED BY THE ENGINEER. ALL FIELD ADJUSTMENTS SHALL COMPLY WITH ALL WIDTH RESTRICTIONS.

#### REFERENCES

WORK ZONE TRAFFIC  
CONTROL ENGINEER



SIGNATURE  
DATE 10-13-2009

6			
5			
4			
3			
2			
1	8-10-09	JCS	REVISED DESIGN
0	4-23-08	JCS	NEW DRAWING
#	DATE	CHK	DESCRIPTION

**SCDOT**  
SOUTH CAROLINA DEPARTMENT OF TRANSPORTATION  
DESIGN STANDARDS OFFICE  
955 PARK STREET  
ROOM 405  
COLUMBIA, SC 29201

STANDARD DRAWING

TEMPORARY  
CONCRETE BARRIER  
SAFETY SHAPE  
ANCHORAGE  
BOLT THROUGH  
J-J HOOK

605-205-04

EFFECTIVE LETTING DATE JAN 2010