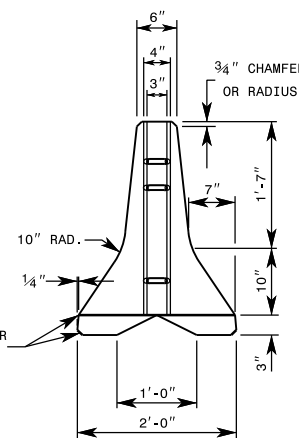


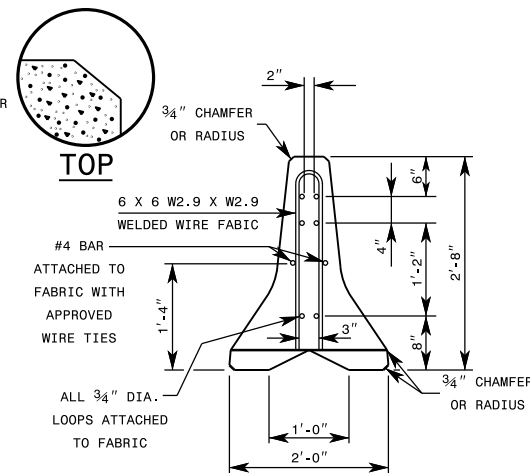
PLAN



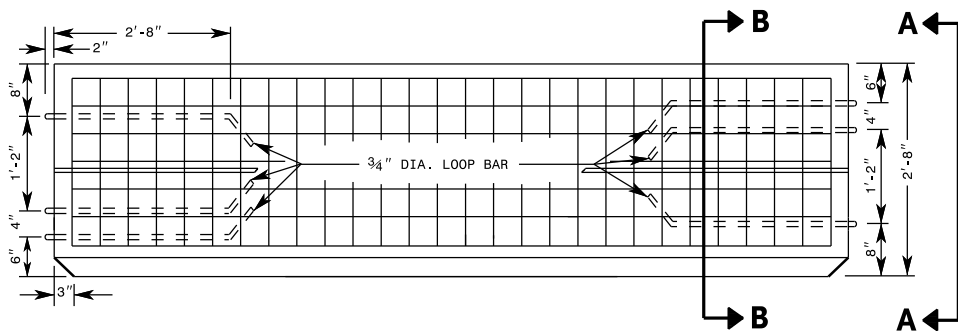
BOTTOM



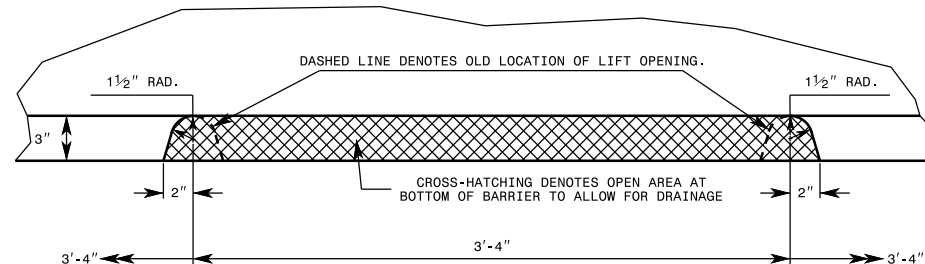
END VIEW A-A



SECTION B-B



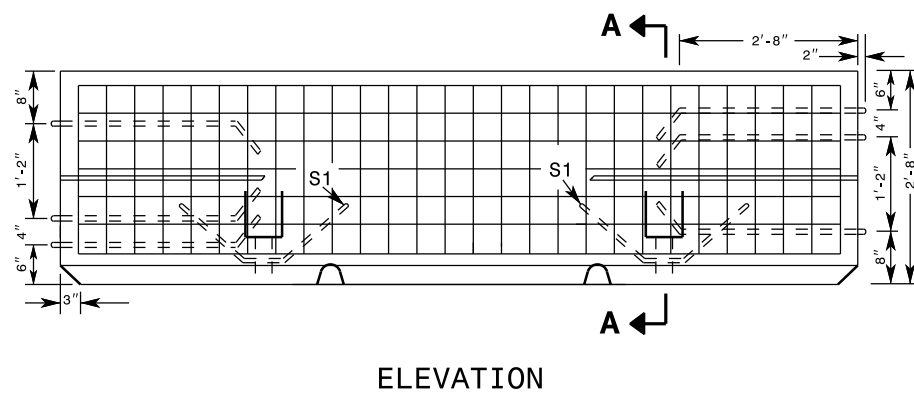
ELEVATION



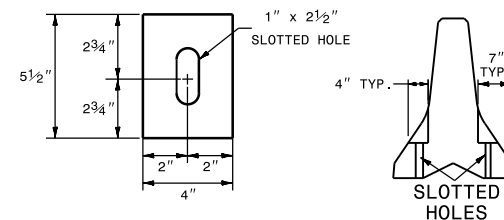
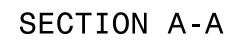
ELEVATION DETAIL OF DRAINAGE/LIFT SLOT

**GENERAL NOTES**

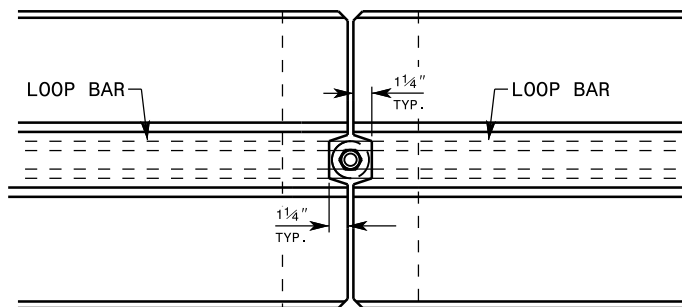
- 1- THE DRAINAGE/LIFT SLOT SHOWN IS A MODIFICATION OF THE LIFT OPENINGS, ALL OTHER DESIGN CRITERIA SUCH AS REINFORCEMENT BARS ETC. ARE THE SAME AS SHOWN ON THE STANDARD DRAWING.
- 2- BARRIER WITH DRAINAGE/LIFT SLOT IS INTENDED TO BE USED IN AREAS WHERE ROADWAY SURFACE WATER RUNOFF CAUSES EXCESS PUDDLING ADJACENT TO THE TEMPORARY BARRIER. INSTALL THE BARRIER AS SHOWN IN THE PLANS, OR AS DIRECTED BY THE ENGINEER.
- 3- DRAINAGE/SLOT CAN BE USED WITH ANCHORED "PORTABLE CONCRETE BARRIER".



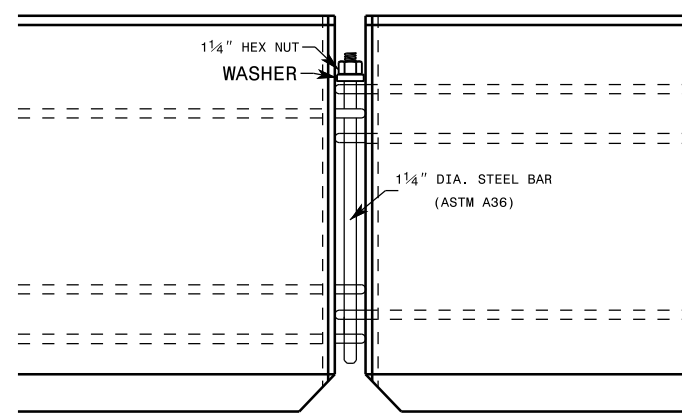
NOTE: REFER TO STD. DWG. 1170.01-SHEET 4 FOR  
METHODS OF ANCHORING TEMPORARY BARRIER.



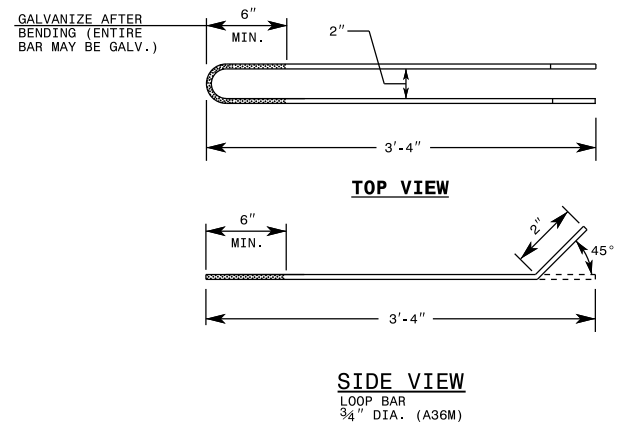
### DETAIL OF SLOT



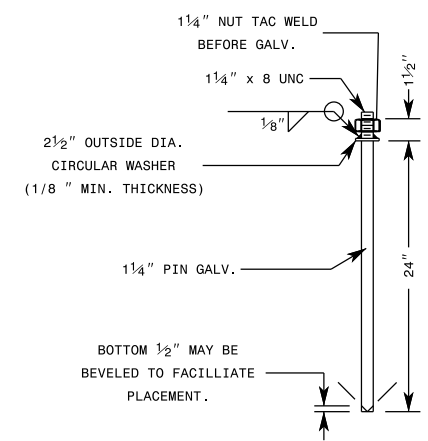
PLAN OF CONNECTION



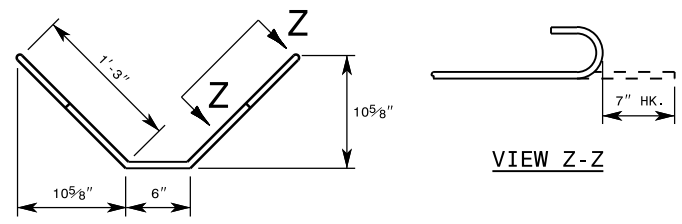
ELEVATION OF CONNECTION



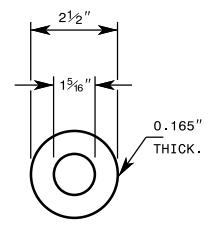
REINFORCEMENT DETAIL



CONNECTOR PIN ASSEMBLY

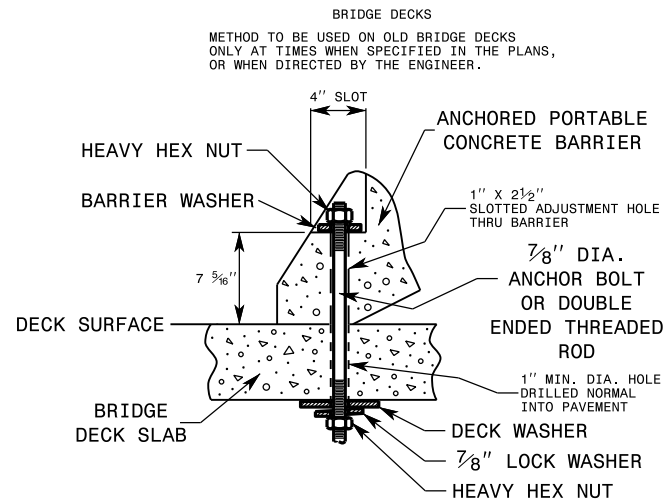


S1 BARS  
#5 BARS

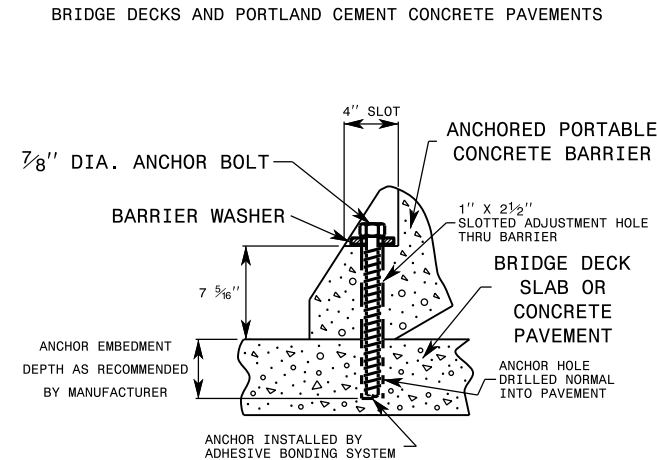


PLAIN GALVANIZED  
STEEL WASHER  
FOR 1 1/4\"/>

## THRU-THE-DECK ANCHOR METHOD

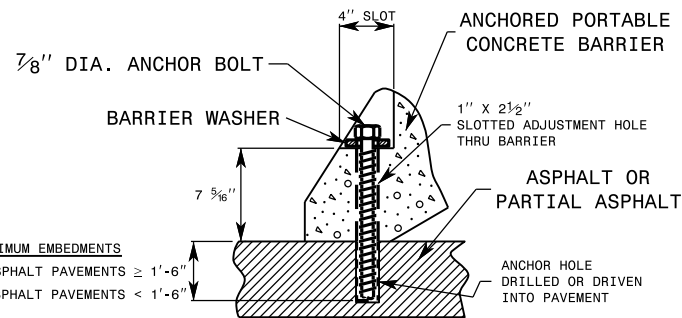


## ADHESIVE BONDING SYSTEM ANCHOR METHOD



## ANCHOR BOLT METHOD

BITUMINOUS PAVEMENTS



### MINIMUM EMBEDMENTS

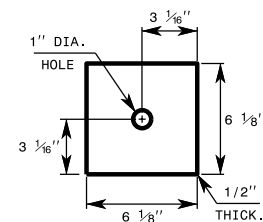
1'-6" FOR ASPHALT PAVEMENTS ≥ 1'-6"  
2'-0" FOR ASPHALT PAVEMENTS < 1'-6"

NOTE: THESE EMBEDMENT DEPTHS ARE TYPICAL FOR MOST APPLICATIONS. HOWEVER, DUE TO VARYING ASPHALT CONDITIONS, THEY MAY NOT BE ADEQUATE FOR ALL CASES.

## DECK & BARRIER WASHERS

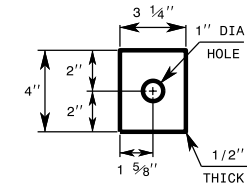
### DECK WASHER

THRU-THE-DECK METHOD ONLY



### BARRIER WASHER

ALL APPLICATIONS



## GENERAL NOTES

- 1- BARRIER CAN ONLY BE ANCHORED ON ASPHALT OR CONCRETE SURFACES.
- 2- BARRIER CAN ONLY BE PLACED ON ASPHALT OR CONCRETE SURFACES UNLESS OTHERWISE SPECIFIED BY THE ENGINEER.
- 3- EACH 10 FT. SECTION OF BARRIER REQUIRES 2 ANCHOR ASSEMBLIES ON THE SIDE OF TRAFFIC WHEN INSTALLED ON CONCRETE, AND 4 ANCHOR ASSEMBLIES WHEN INSTALLED ON ASPHALT.
- 4- EXPANSION ANCHORS WILL NOT BE PERMITTED FOR USE ON BRIDGE DECKS.
- 5- DO NOT DRILL HOLES INTO PRESTRESSED CONCRETE BRIDGE DECK PANELS.
- 6- USE ASTM A325 HIGH STRENGTH GALVANIZED ANCHOR BOLTS.
- 7- DRILL ANCHOR HOLES IN CONCRETE WITH A PNEUMATIC DRILL.
- 8- FOR BARRIER SECTIONS THAT EXTEND ACROSS CONCRETE JOINTS, DO NOT ANCHOR ON BOTH SIDES OF THE JOINT, OMIT THE ANCHOR CLOSEST TO THE JOINT.
- 9- TIGHTEN ANCHORS "SNUG TIGHT". TURN THREADED RODS AT LEAST 1 FULL OF THREADS EXTENDING ABOVE THE NUT. DO NOT PROTRUDE THE TOP OF THE ANCHOR ABOVE THE SIDE OF THE BARRIER.
- 10- COAT ANCHORS USED WITH THE ADHESIVE BONDING ANCHORING SYSTEM WITH A DEBONDING AGENT SO THE ANCHORS CAN BE EASILY REMOVED. DO NOT REDUCE THE STRENGTH OF THE ANCHOR SYSTEM WITH THE DEBONDING AGENT.
- 11- ONCE REMOVED, COMPLETELY FILL ANCHOR HOLES WITH AN APPROVED, NON-SHRINK, NON-METALLIC GROUT, OR AS DIRECTED BY THE ENGINEER.

ROADWAY STANDARD DRAWING FOR  
**PORTABLE CONCRETE BARRIER**  
ANCHORING METHODS

1-18

STATE OF  
NORTH CAROLINA  
DEPT. OF TRANSPORTATION  
DIVISION OF HIGHWAYS  
RALEIGH, N.C.

SHEET 4 OF 4

1170.01